

RAPID'Chromogenic Media

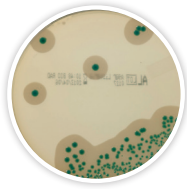
Culture Media for the Detection and Enumeration of Food and Environmental Pathogens and Quality Indicators



RAPID'Chromogenic Media Technology and Applications

RAPID'Chromogenic Media are a complete range of highly selective chromogenic agars designed to detect and enumerate various microorganisms in food and environmental samples. They offer economical, labor-saving protocols and provide a shorter time to results than classical methods. The combination of the selected chromogenic mixture with high-quality raw material allows for high levels of contrast, selectivity, and sensitivity—making these plates easy to read.

AL=*Listeria* according to Ottaviani and Agosti)



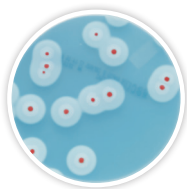
Applications

- Protocols for detection and enumeration
- Approved for ISO 11290-1 and 11290-2 protocols
- Recommended in FDA BAM Chapter 10
- Approved for MFLP-74 protocol
- Confirmation of iQ-Check™ *Listeria monocytogenes* and *Listeria* spp. II real-time PCR results



Enzymatic Activity	<i>L. monocytogenes</i>	<i>Listeria</i> spp.	Non- <i>Listeria</i>
PI-PLC detection	+	–	–
β-D-glucosidase	+	+	–

RAPID'*B.cereus*



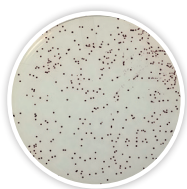
Applications

- Enumeration of the *Bacillus cereus* group
- Clear enumeration of the sensitive *B. cytotoxicus*
- Inhibition of background flora on raw matrices
- No confirmation required



Enzymatic Activity	<i>B. cereus</i> (e.g., <i>B. cereus sensu stricto</i>)	<i>B. cytotoxicus</i>	<i>B. cereus</i> (e.g., <i>B. mycoides</i>)	Atypical <i>B. cereus</i> (e.g., <i>B. thuringiensis</i>)
Chromogenic substrate	+	+	+	+
Phospholipase	+	+	+	–

RAPID'*Campylobacter*



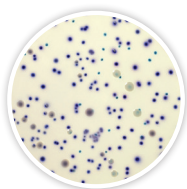
Applications

- Protocols for detection and enumeration
- Approved as second media in ISO 10272-1 protocol
- Inhibition of competing organisms
- Validation with Hunt broth (see USDA MLG)
- No confirmation required



Enzymatic Activity	Thermophilic <i>Campylobacter</i> spp.
Chromogenic substrate	+

RAPID'*E.coli* 2



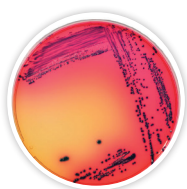
Applications

- Enumeration of *Escherichia coli* and other coliforms
- Differentiation by color, not gas formation
- Can be incorporated into a hygiene monitoring program
- No confirmation required



Enzymatic Activity	<i>E. coli</i>	Other Coliforms	Non-Coliforms
Beta-D-Glucuronidase	+	–	–
Beta-D-Glucuronidase	+	+	–

RAPID'*E.coli* O157:H7



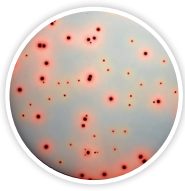
Applications

- Detection of *E. coli* O157:H7
- Approved as second media in ISO 16654 protocol
- Confirmation of iQ-Check *E. coli* O157:H7 real-time PCR results
- Detection of rare sorbitol-positive strains



Enzymatic Activity	<i>E. coli</i> O157:H7	Other <i>E. coli</i>	Other Bacteria
Beta-D-Glucuronidase	–	+	–
Beta-D-Glucuronidase	+	+	–
Sorbitol	–	+	+/–

RAPID[®]Enterobacteriaceae



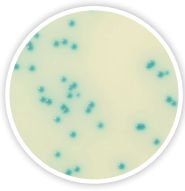
Applications

- Enumeration of *Enterobacteriaceae*
- Surface inoculation or pour-plate method
- Can be incorporated into a hygiene monitoring program
- No confirmation required



Enzymatic Activity	<i>Enterobacteriaceae</i>	Non- <i>Enterobacteriaceae</i>
Glucose fermentation	+	-

RAPID[®]Listeria spp.



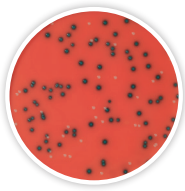
Applications

- Detection of *Listeria* spp.
- Confirmation of iQ-Check *Listeria* spp. real-time PCR results
- Can be part of an environmental monitoring program



Enzymatic Activity	<i>Listeria</i> spp.
β-D-glucosidase	+

RAPID[®]L.mono



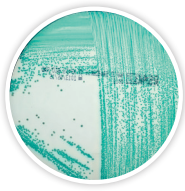
Applications

- Enumeration and detection of *L. monocytogenes* and detection of *Listeria* spp.
- Approved as second media in ISO 11290-1 protocol
- Recommended in FDA BAM Chapter 10
- Approved for MFHPB-30 and MFLP-74 protocols
- Confirmation of iQ-Check *Listeria monocytogenes* II real-time PCR results



Enzymatic Activity	<i>L. monocytogenes</i>	<i>L. ivanovii</i>	<i>L. innocua</i>	<i>L. welshimeri</i>
PI-PLC detection	+	+	-	-
Xylose fermentation	-	+	-	+

RAPID[®]Sakazakii



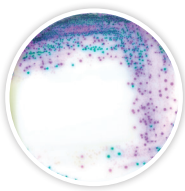
Applications

- Detection of *Cronobacter* spp.
- Confirmation of iQ-Check *Cronobacter* spp. real-time PCR results
- Harmonized enrichment protocol with RAPID[®]Salmonella for select matrices



Enzymatic Activity	<i>Cronobacter</i> spp.	Other <i>Enterobacteriaceae</i>
α-D-glucosidase	+	-

RAPID[®]Salmonella



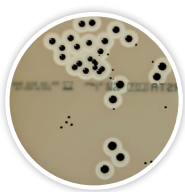
Applications

- Detection of *Salmonella* spp.
- Single 24 hr enrichment protocol without subculturing
- Approved as second media in ISO 6579-1 protocol
- Confirmation of iQ-Check *Salmonella* II real-time PCR results
- Harmonized enrichment protocol with RAPID[®]Sakazakii for select matrices



Enzymatic Activity	<i>Salmonella</i> spp.	Other <i>Enterobacteriaceae</i>	<i>Proteus</i> spp.
C8 esterase	+	+	-
β-D-glucosidase	-	+	-

RAPID[®]Staph



Applications

- Enumeration of coagulase-positive staphylococci
- Final result in 24 hr
- Fast latex confirmation



Enzymatic Activity	<i>Staphylococcus</i> Coagulase-Positive	<i>Staphylococcus</i> Coagulase-Negative
Potassium tellurite reduction	+	+
Egg yolk proteolysis	+	-

Validations

Chromogenic Media	NF Validation by AFNOR Certification	AOAC	NordVal	Health Canada	Chromogenic Media	NF Validation by AFNOR Certification	AOAC	NordVal	Health Canada
AL	•				RAPID' <i>Listeria</i> spp.	•	•		
RAPID' <i>B.cereus</i>	•				RAPID' <i>L.mono</i>	•	•	•	•
RAPID' <i>Campylobacter</i>	•	•			RAPID' <i>Sakazakii</i>	•			
RAPID' <i>E.coli</i> 2	•	•	•	•	RAPID' <i>Salmonella</i>	•	•	•	
RAPID' <i>E.coli</i> O157:H7	•	•			RAPID' <i>Staph</i>			•	
RAPID' <i>Enterobacteriaceae</i>	•								

Ordering Information

Catalog #	Description	Catalog #	Description	Catalog #	Description
Buffered Peptone Water Plus Broth		RAPID'<i>Campylobacter</i> Agar		RAPID'<i>Sakazakii</i> Agar	
3554179	Ready to use, 225 ml x 6 bottles	3564295	Dehydrated base, 500 g	3563971	Ready to use, 90 mm x 20 plates
3555795	Ready to use, 3 L x 4 bags	3564296	Supplement, 1 box, 10 vials	3564976	Dehydrated base, 500 g
3555790	Ready to use, 5 L x 2 bags	12012036	Ready to use, 90 mm x 20 plates	12013322	PIF Supplement, 2 g
3564684	Dehydrated base, 500 g	RAPID'<i>E.coli</i> 2 Agar		RAPID'<i>Salmonella</i> Agar	
Buffered Peptone Water Standard Broth		3555299	Ready to use, 100 ml x 6 bottles	3563961	Ready to use, 90 mm x 20 plates
12013260	Ready to use, 5 L x 2 bags	3555297	Ready to use, 200 ml x 6 bottles	3563963	Ready to use, 90 mm x 120 plates
12013259	Dehydrated base, 500 g	3564024	Dehydrated base, 500 g	3564705	Dehydrated base, 500 g
12013258	Dehydrated base, 5 kg	RAPID'<i>E.coli</i> O157:H7 Agar		3564709	Enrichment supplement capsules, 10x, 100 capsules
Half Fraser Plus Broth		3564748	Dehydrated base, 100 g	3564710	Enrichment supplement capsules, 100 capsules
3564604	Dehydrated base, 500 g	RAPID'<i>Enterobacteriaceae</i> Agar		3564712	Enrichment supplement, 100 analyses
3564616	Supplement, 1 box, 10 vials	3554012	Ready to use, 200 ml x 6 bottles	3556710	<i>Salmonella</i> Latex Test, 75 tests (confirmation)
3555797	Ready to use, 225 ml x 6 bottles	3564004	Dehydrated base, 500 g	12013322	PIF Supplement, 2 g
3555794	Ready to use, 3 L x 4 bags	RAPID'<i>Listeria</i> spp. Agar		RAPID'<i>Staph</i> Agar	
Half Fraser Standard Broth		3564744	Dehydrated base, 500 g	3563960	Ready to use, 90 mm x 20 plates
12018707	Ready to use, 5 L x 2 bags	3564745	Supplement 1, 1 box, 10 vials	3564704	Dehydrated base, 500 g
12018706	Dehydrated base, 500 g	3564746	Supplement 2, 1 box, 10 vials	3556356	Pastorex Staph Plus Latex Agglutination Test, 50 tests
12018705	Dehydrated base, 5 kg	RAPID'<i>L.mono</i> Agar		3556353	Pastorex Staph Plus Latex Agglutination Test, 5 x 50 tests
AL		3563964	Ready to use, 90 mm x 120 plates		
3563965	Ready to use, 90 mm x 120 plates	3563694	Ready to use, 90 mm x 20 plates		
3563695	Ready to use, 90 mm x 20 plates	3555294	Ready to use, 190 ml + supplements		
3564043	Dehydrated base, 500 g	3564293	Dehydrated base, 500 g		
3555200	Ready to use, 6 x quantity for 250 ml	3564294	Supplement 1, 1 box, 10 vials		
3564041	Supplement 1, 1 box, 10 vials	3564746	Supplement 2, 1 box, 10 vials		
3564042	Supplement 2, 1 box, 10 vials	3553669	Rhamnose Test, 1 ml x 28 tubes		
RAPID'<i>B.cereus</i> Agar					
12007304	Ready to use, 90 mm x 20 plates				
12007305	Dehydrated base, 500 g				
12007306	Supplement 1, 1 box, 10 vials				
12007307	Supplement 2, 1 box, 10 vials				

For more information and to see how our products can be incorporated into food testing workflows, visit our website:

RAPID'Chromogenic Media — [bio-rad.com/RapidMedia](https://www.bio-rad.com/RapidMedia)

iQ-Check Real-Time PCR Kits — [bio-rad.com/iQCheck](https://www.bio-rad.com/iQCheck)

Bio-Rad is a trademark of Bio-Rad Laboratories, Inc. iQ-Check is a trademark of Bio-Rad Europe GmbH in certain jurisdictions. All trademarks used herein are the property of their respective owner. © 2026 Bio-Rad Laboratories, Inc.



**Bio-Rad
Laboratories, Inc.**

Life Science
Group

Website [bio-rad.com](https://www.bio-rad.com) USA 1 800 424 6723 Australia 61 2 9914 2800 Austria 00 800 00 24 67 23 Belgium 00 800 00 24 67 23 Brazil 4003 0399 Canada 1 800 361 1808 China 86 21 6169 8500 Czech Republic 00 800 00 24 67 23 Denmark 00 800 00 24 67 23 Finland 00 800 00 24 67 23 France 00 800 00 24 67 23 Germany 00 800 00 24 67 23 Hong Kong 852 2789 3300 Hungary 00 800 00 24 67 23 India 91 124 4029300 Israel 0 3 9636050 Italy 00 800 00 24 67 23 Japan 81 3 6361 7000 Korea 82 080 007 7373 Luxembourg 00 800 00 24 67 23 Mexico 52 555 488 7670 The Netherlands 00 800 00 24 67 23 New Zealand 64 9 415 2280 Norway 00 800 00 24 67 23 Poland 00 800 00 24 67 23 Portugal 00 800 00 24 67 23 Russian Federation 00 800 00 24 67 23 Singapore 65 6415 3188 South Africa 00 800 00 24 67 23 Spain 00 800 00 24 67 23 Sweden 00 800 00 24 67 23 Switzerland 00 800 00 24 67 23 Taiwan 886 2 2578 7189 Thailand 66 2 651 8311 United Arab Emirates 36 1 459 6150 United Kingdom 00 800 00 24 67 23